

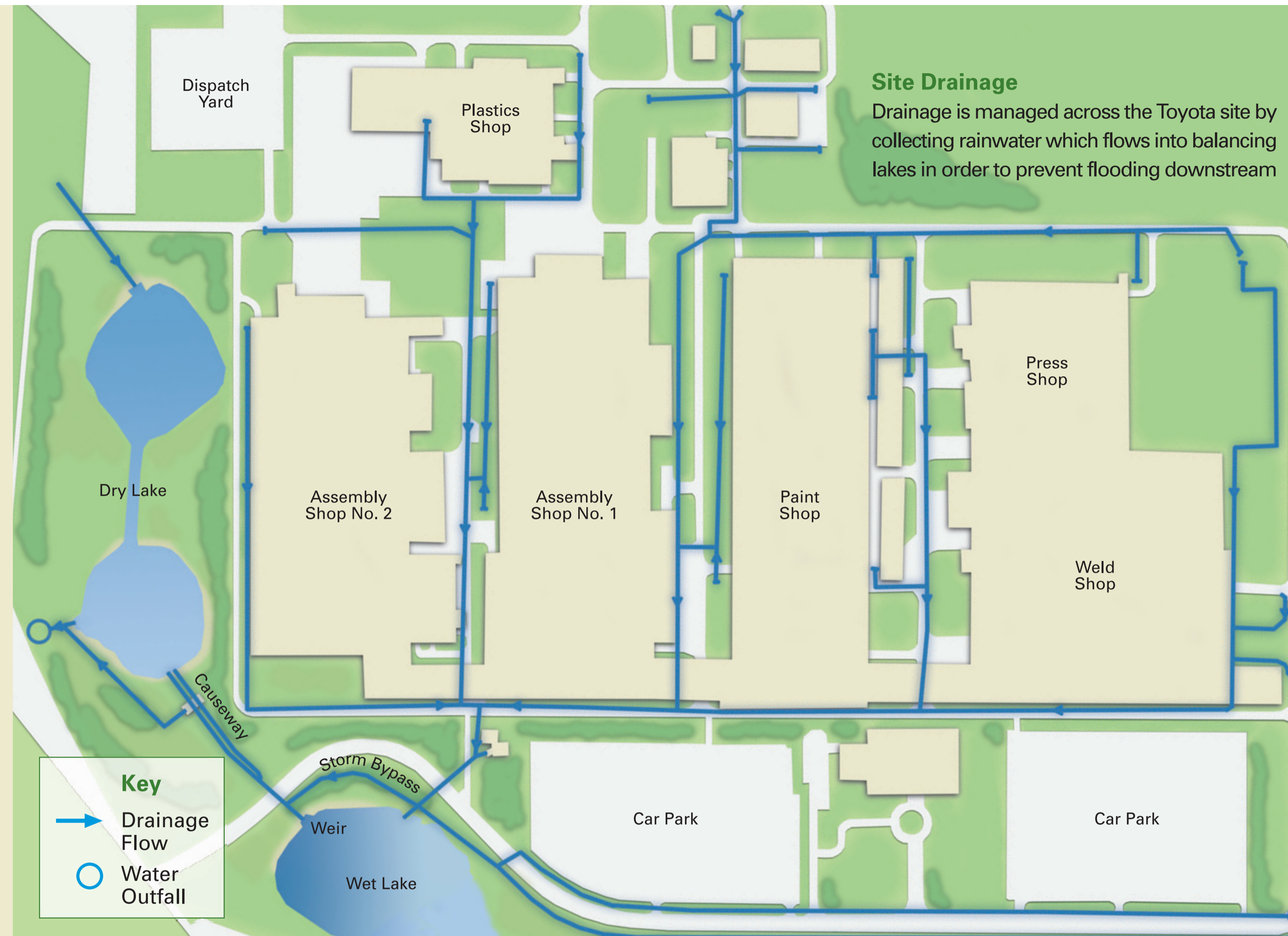
Viewing Point 2

Toyota Balancing Lakes

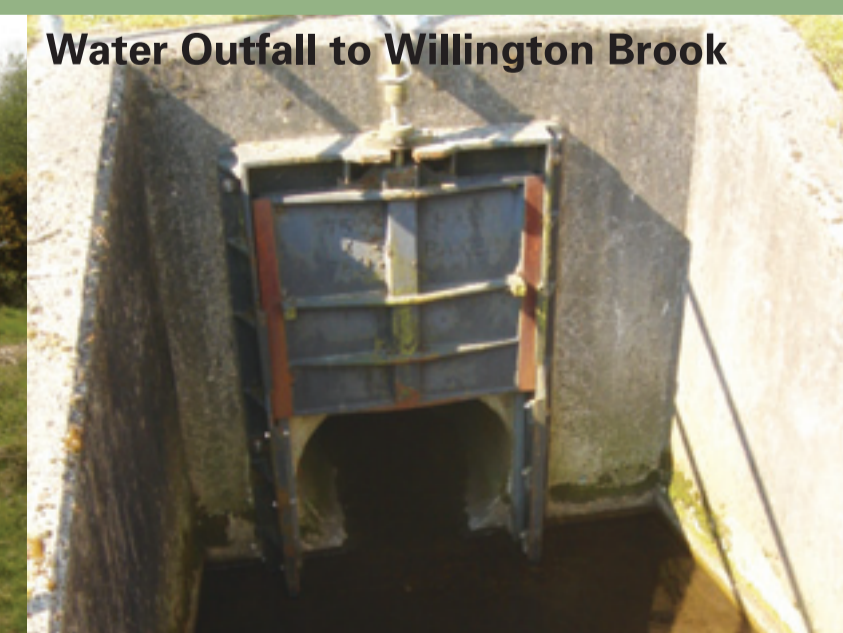
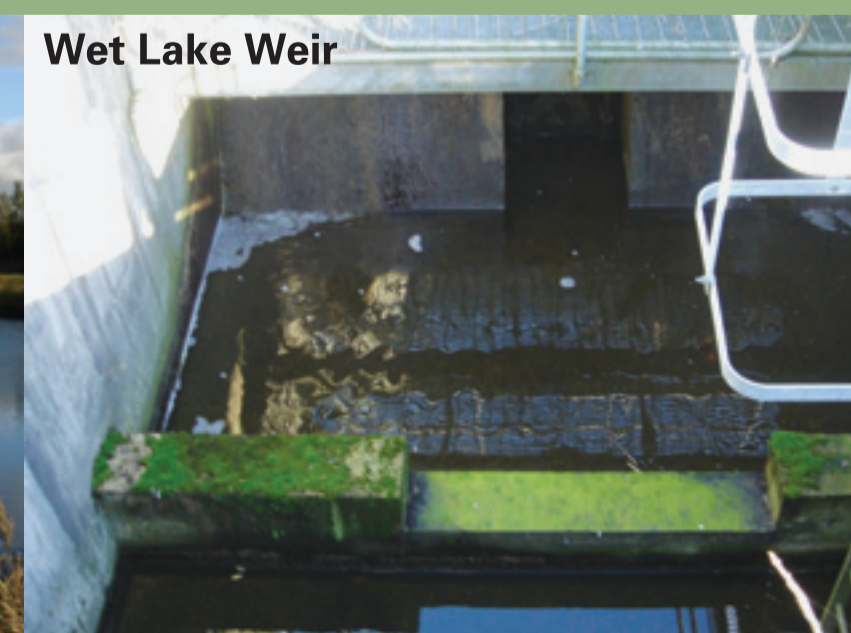
When building a major factory, care and consideration has to be given to the handling of rainwater to prevent the risk of flooding.

The Toyota site occupies a built area of 2.35 million m². The rainwater that falls on the site flows under gravity towards the balancing lakes via a surface water drainage system. The water enters the wet lake which holds upto 35,000m³ of rainwater. The water then flows over a weir along the causeway under your feet here and finally is discharged to Willington Brook through an outfall that controls the flow to 1.0 metre per second.

During storms high flowing water will bypass the wet lake and flow along the causeway into the dry lake which has enough capacity to hold a 1-in-100 year storm. From the dry lake the water drains through the same outfall into Willington Brook. The lakes are therefore an engineered facility to balance the fluctuating flows in rainwater to prevent flooding downstream. Since construction in 1992, plants and animals began to inhabit the area and from 2009 we have managed the site through a Biodiversity Action Plan.



Photographs by Toyota UK Limited, R A Scholefield



Did you know?

Before Toyota built its factory here the site was an airfield referred to as Derby Airport. Up to 1968 it was a small passenger airport with flights to Guernsey, Jersey, Isle of Man, Belfast and Glasgow



TOYOTA

TOYOTA MOTOR
MANUFACTURING (UK) LTD

Working in partnership to protect wildlife for the future

